



Head office in Denmark

INTEGRATED GAS TECHNOLOGIES

Add: Gydevang 39-41 DK-3450 Allerød Denmark

Tel: 0045-4576 9921 Fax: 0045-4576 9821

E-mail: sales@igt-lpg.com

Web: http://www.igt-lpg.com



Factory in China

NINGBO SHUAI XIAN REGULATOR CO.,LTD.

Add: No.566 Jinshan Road, Zone C, Investment centre Jiangbei District, Ningbo city, Zhejiang, P.R.C.

Tel: 0086-574- 6250 2121 Fax: 0086-574-6250 2127

E-mail: sale1@igtchina.com

Web: http://www.igtchina.com



Factory in India

Integrated Gas (C) Technologies Pvt Ltd

Add: Plot No 84, ALEAP Industrial Area, Gajularamaram,Hyderabad - 500055 Telangana, India.

Tel : +919000947218

Email: sales@igt-lpg.in



INTEGRATED GAS TECHNOLOGIES

Company Profile

Welcome to Integrated Gas Technologies and Ningbo Shuai Xian Regulator Co Ltd

Integrated Gas Technologies or IGT® as we are branded is a gas control equipment company founded 2004 excelling in manufacturing and marketing of LPG cylinder regulators, cylinder valves and equipment accessories.

IGT has the business scope of offering LPG regulator products and services worldwide. IGT has now two factories, NBSX located in Ningbo since 2004 and IGCT located in Hyderabad India since 2016.

IGT two factories employs 150 people directly. The factories have been audited and approved by among other international gas appliance companies and meet the high standards of this customer segment. Both factories are ISO9001 certified and in 2014 the NBSX factory was also certified to BSCI (www.bsci-int.org), a Business Social Corporate Initiative to ensure compliance with European social responsibility code of conduct, as well as the USA equipment WCA Audit.

How is IGT different from other suppliers?

Before IGT entered the market in 2004 most markets had two offerings;

- either an expensive European made LPG regulator of good quality with a minimum 5 year life cycle
- or alternatively a cheap “copy” LPG regulator of very poor quality, often dangerous to use and with a short life cycle that made it expensive for the end user taking replacement cost into considerations.

In 2018 these offers still exist but in a much smaller extent as IGT now serves approximately 10 % of the global domestic regulator markets by offering a high quality and flexible product in both Basic, Standard and Premium versions all at very attractive value propositions.

IGT’s promise to our customer is “Striving for perfection”. It summarizes well how IGT

differentiates itself from competitors. IGT is focused on bringing well designed, perfectly assembled, 100 % tested and professionally packaged, clearly bar coded, safe and sound LPG regulator products to market in a timely and professional manner, always price/quality competitive and on a global scale, delivered directly to your warehouse or nearest preferred harbour.

All IGT products are of our own design, IPR protected, well surface treated attached with local language working instruction, and approved to international standards.

IGT utilizes the best raw materials such as zamac3, brass, steel and rubber for all our components. In addition, we conduct a 100 % quality control both during assembly and final assembled products. All IGT LPG regulators come with a 5 years product warranty and a 5 million USD product liability insurance, IGT is liable for the product quality during the complete life of the product. Our unique product and service offers a combination of high quality, affordable products and high degree of flexibility and responsiveness to your needs while delivering the product in the right place at the right time without delay, this unique market positioning differentiates IGT from all other competitive offers in the market place today.



Head office in Denmark



Factory in China

IGT invite you to do business together.

After 14 years in business IGT is now considered a well-established company, we already enjoy a leading market share in many markets, which we have served for more than 10 years. We are keen to expand our business activities around the world and to serve our customers to perfection. IGT pursues our growth vision by continually developing new products and services, establishing new distributors, new dealers and engaging with new market segments.

If you are a potential new customer or partner of Integrated Gas Technologies, please study our web site for a few minutes, and send us an email at sales@igt-lpg.com now with your inquiry. We are eager to learn how IGT can serve you in the best possible way.

Yours sincerely,

Tom Lundquist, CEO
Integrated Gas Technologies Ltd

Luke Lu, General Manager
Ningbo Shuai Xian Regulator Co.,Ltd

Naresh Kumar, G.M.
IGCT



Contents




- 01 ● Gas Cylinder vs. Regulator with manometer level indicator
- 02 ● Certificates
- 03-05 ● Low Pressure Regulators-Compact Snap on Regulator for LPG A100is
- 06-08 ● Low Pressure Regulators-Jumbo Click on Regulator for LPG A235is
- 09-13 ● Low Pressure Regulators-Hand Wheel on Regulator for LPG A300i
- 14 ● Low Pressure Regulators-Camping Regulator for LPG A500is
- 15-17 ● A300USL Single Stage Low Pressure Gas Regulator (CSA/UL)
- 18 ● Middle Pressure Regulators-3kg/h 300-700mbar Regulator A320
- 19 ● LPG Gas Regulators A400i
- 20 ● Change Over
- 21-22 ● High Pressure Regulators B100/B235is/B300
- 23 ● Unreduced Pressure Coupling C100/C235is
- 24 ● Hose and Accessories
- 25 ● Packaging
- 26 ● Manometer

Sales Network

By 2018 IGT is a global supplier of domestic LPG regulators, with sales in over 110 countries.

IGT has a worldwide distribution sales network with own sales staff in Europe, United States, Latin, America/Mexico, Russia-SNG countries and China.

See complete distributor and dealer list on WWW.IGT-LPG.COM

-  Headquarters: Denmark
-  Factory and Sales Office
-  Sales Office

Gas Cylinder vs. Regulator with manometer level indicator

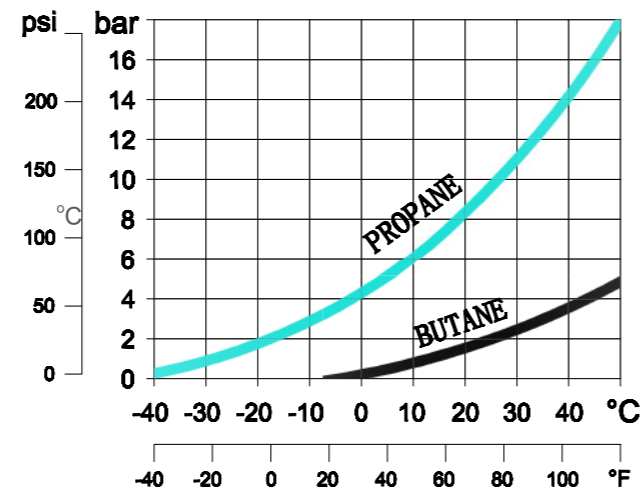
Type of gas in the cylinders

LPG contained in the cylinders are supplied either as Butane, or Propane, or a mix LPG of the two depending of country of use.

Large quantities of flammable vapour can be produced from relatively small amounts of liquid LPG stored in cylinders and gas tanks. This makes LPG an ideal portable fuel. Cylinders must always remain upright to ensure only vapour exits the cylinder valve before it enters the regulators.

At atmospheric pressure Butane boils at -2°C and propane boils at -45°C

Contained in cylinders or bulk tank, LPG remains a liquid under pressure and this pressure depends on the type of LPG and the ambient or cylinder temperature surrounding the cylinder. The chart shows the vapour pressure within a gas cylinder at various ambient temperatures.

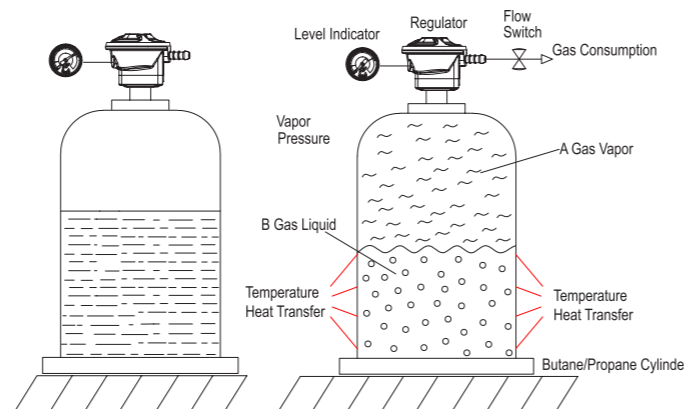


Vaporisation in the cylinder

When there is an off-take of gas from the gas cylinder, the gas volume consumed is regenerated by boiling off the liquid part. This vaporization cools down the liquid. The heat required to continue the LPG to boil is transferred from the surrounding air in contact with the cylinder.

Propane or mixed LPG delivers high pressure at colder temperatures and is vaporized faster so it is used and stored outside. Butane is used mainly for indoor or summer use.

During off-take, the temperature and pressure decreases. When only a small drop of liquid remains in the cylinder, the gas pressure has reached the minimum of 0.3bar. The larger the cylinder the greater the surface area, and the more GAS vapour can be supplied.



Gas Cylinder vs. Regulator with manometer level indicator

Typical vapourisation rates on cylinders

The GAS flow rate supplied depends on: the type of gas, the liquid gas level in the cylinder, the ambient temperature, and the duration of use.

Cylinders can only supply a certain rate of vapour and must be sized correctly to meet the heat consumption of the appliances. Often an overlooked part of a LPG installation is the correct sizing or number of cylinders applied to ensure that the cylinder regulator delivers the correct flow rate.

The nominal capacity of the regulator is normally "the worst case scenario", to ensure the regulator operate in both very cold or hot climatic conditions and at lowest cylinder contents. This means in most cases our regulators are able to supply more than the rated capacity for a short time. However off-take rates for cylinders are typically less than the regulators nominal capacity as indicated below.

Recommended maximum offtake rates for LPG cylinders

	Cylinder Size kg	Offtake rate kg/h	Offtake rate kW(kilowatt)
Butane	15kg	0.70kg/h	9.70
Propane	13kg	1.05kg/h	14.60
	19kg	1.32kg/h	18.35
	47kg	2.37kg/h	32.94

Certificates

Major Regulator's Certification:

- CE - Europe
- CSA - USA&Canada
- SAI - Australia
- SABS - South Africa
- SON CAP - Nigeria
- SNI - Indonesia
- SIRIM - Malaysia
- NTP - Peru
- NTC - Colombia
- NCh - Chile
- NTE INEN - Ecuador
- Gas del Estado - Argentina
- BIS-India

Major Hoses' Certification:

- EN16436 - Europe
- DVGW - Germany
- CSA - USA&Canada
- AGA - Australia
- NTC-3561 - Colombia

Low Pressure Regulators-Compact Snap on Regulator for LPG A100is

Application:

Used in conjunction with a cylinder valve to reduce cylinder pressure to a 28-50 mbar outlet pressure.
Connected with domestic Appliances: Stoves, cookers, cabinet heaters, patio heaters, BBQ, etc.

Specifications:

Inlet options: 20 / 21 / 22 / 25.6 / 27 mm
Outlet options: 8 / 10 / 11mm ,thread 1/4"LH
Rated capacity 1,5 kg/h
Optional excess flow valve, either automatic or manual activated
Outlet pressure options: 28 mbar, 29 mbar, 30 mbar 37 mbar 50 mbar
Optional diaphragm relief valve;
Optional manometer for leak test and gas level indication.
Body and cover : Die cast zinc alloy/Optional Aluminum
Diaphragm: NBR



Basic Type
A100is



Standard Plus Type
A100is-M

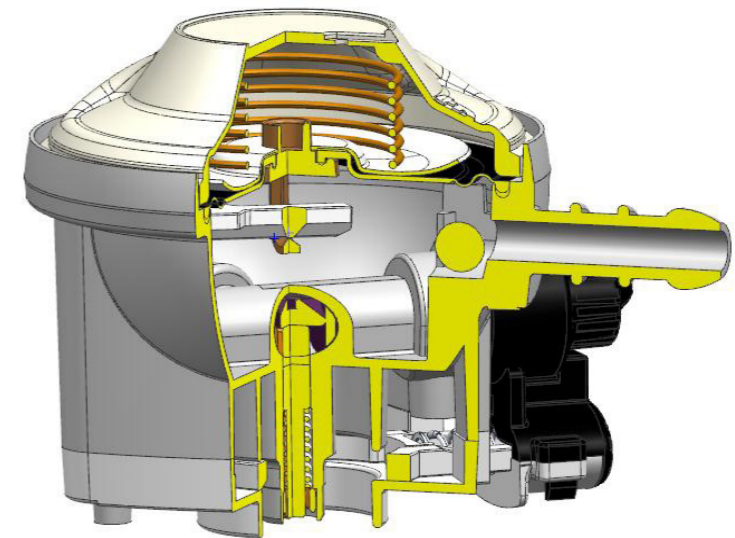


Premium Type
A100isp

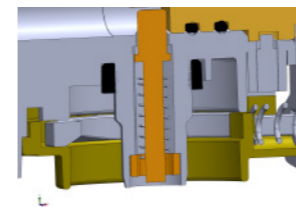


Premium Plus Type
A100isp-M

New IGT type A100is regulator



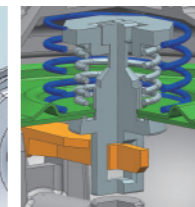
Optional features



Dual seal(New Patented) against the valve up to 17bar.



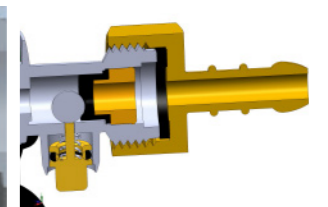
Regulator equipped with level indicator and Leak test function
Rotating 360 degree.



Diaphragm relief valve



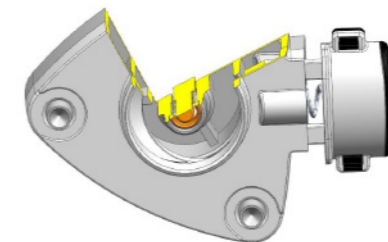
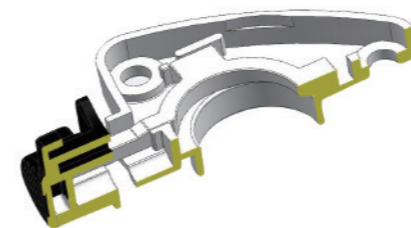
Has automatic hose break safety(Excess Flow Valve)
Cut off 90% of gas flow.



Push bottom excess valve.
Cut off 100% of gas flow.

Standard

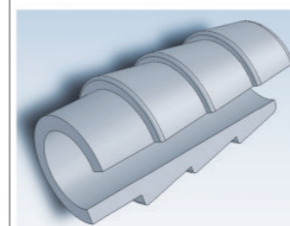
Most Common Inlets



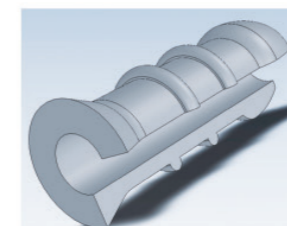
Metal integrated on/off push guarantee regulator can always be disconnected from the valve.

Most Common Outlets

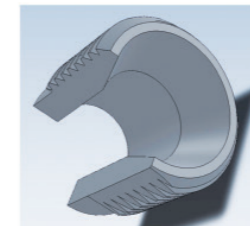
H51: Gas Hose ID 10-11mm



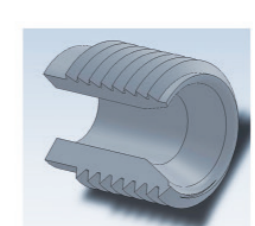
H50: Gas Hose 8mm



H6: 3/8"LH Thread connector



H4: 1/4"LH Thread connector



Basic Type A100is

Inlet size options: 20mm, 21mm, 22mm, 25.6mm, 27mm
 Outlet size options: 8mm/10mm/11mm
 Capacity: 1.5kg/h
 Color options: Silver metallic
 Regulator Size: Diameter Φ63mm



Pic 1



With Child Lock Pic 2



Pic 3

Standard Type A100is/A100is-M

Inlet size options: 20mm, 21mm, 22mm, 25.6mm, 27mm, G61
 Outlet size options: 8mm/10mm/11mm, 1/4"LH thread
 Capacity: 1.5kg/h
 Auto Excess flow or Manual Excess flow
 360 degree rotating manometer
 Color options: Silver, blue, yellow, orange, red, Silver metallic
 Regulator Size: Diameter Φ63mm



Pic 4



Pic 5



Pic 6



Pic 7

Premium Type A100isp/A100isp-M

Inlet size options: 20mm, 21mm, 22mm, 25.6mm, 27mm, Bayonet
 Outlet size options: 8mm/10mm/11mm, 1/4"LH thread
 Capacity: 1.5kg/h
 With or without manometer for gas level/gas leak indication
 360 degree rotating manometer
 With Manual Excess flow
 Color options: Silver, blue, yellow, orange, red, Silver metallic
 Regulator Size: Diameter Φ63mm



Pic 8



Pic 9



Pic 10



Pic 11

Low Pressure Regulators-Jumbo Click on Regulator for LPG A235is

Application:

Used in conjunction with a cylinder valve to reduce cylinder pressure to a 28-67 mbar outlet pressure.
 Connected with domestic Appliances: Stoves, cookers, cabinet heaters, patio heaters, BBQ, etc.

Specifications:

Inlet size: 35mm
 Outlet options: 8 / 10 / 11mm nozzle, 3/8" BSP or G1/2" thread connector
 Rated capacity 1.5 kg/h
 Outlet pressure options: 28/ 29 / 30 mbar / 37 mbar / 50 mbar / 67 mbar
 Body and cover: Die cast zinc alloy/Optional Aluminum
 Diaphragm: NBR



Basic Type
 A235isp

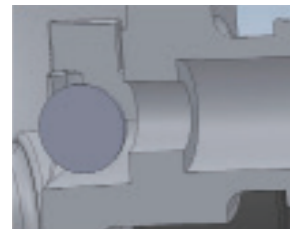
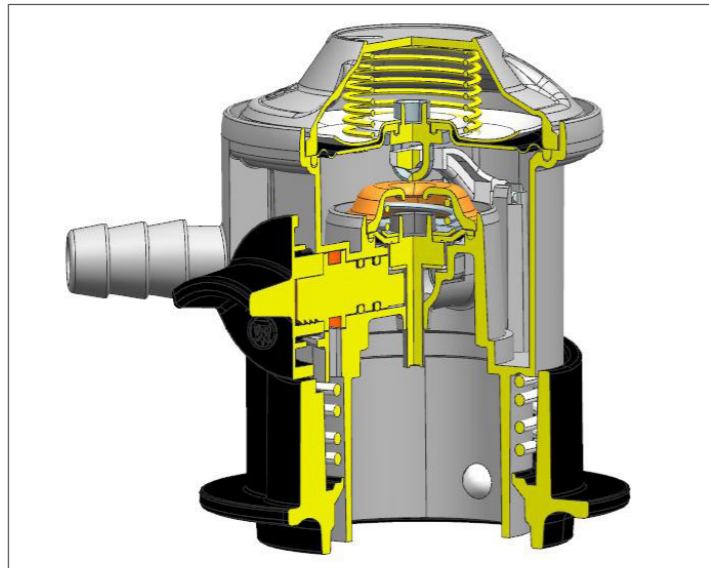


Standard Type
 A235is

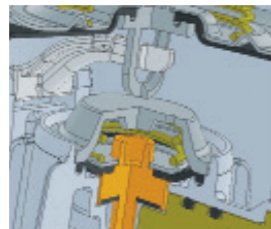


Premium Type
 A235is-M

New IGT type A235is regulator



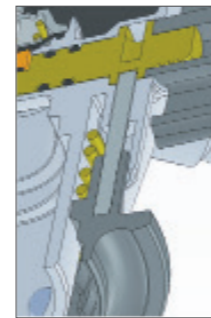
Has automatic hose break safety (Excess Flow Valve)



Two stage regulator securing less than 1 bar pressure at valve seal. And a flow performance up to 2 kg gas/h



Regulator equipped with level indicator and leak test function.

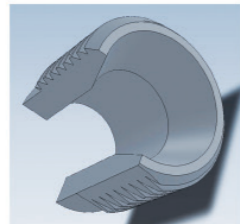


Extra security inter lock feature. To ensure gas flow cannot be opened unless locking ring in locked position

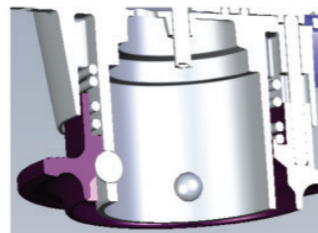
Standard

Most Common Inlets

H6:3/8"LH Thread connector

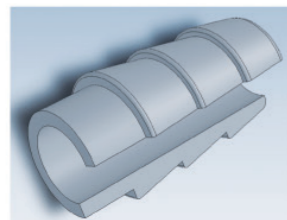


G56:35mm inlet (Click On system)

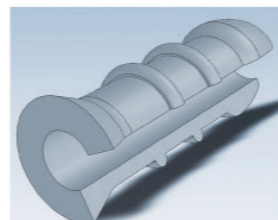


Most Common Outlets

H51:Gas Hose ID 10-11mm



H50:Gas Hose 8mm



Basic Type A235isp

Inlet size: 35mm
 Outlet size options: 8mm/10mm/11mm
 Capacity: 1.5 - 2.0 kg/h
 Without Excess Flow
 Color options: Silver metallic
 Regulator Size: Diameter Φ 63mm



Pic 1



Pic 2

Standard Type A235/A235is

Inlet size: 35mm
 Outlet size options: 8mm/10mm/11mm, 3/8" BSP or G1/2"thread connector
 Capacity: 1.5 - 2.0 kg/h
 With Excess Flow
 With or without safety on-off switch
 Color options:Silver,blue Yellow, Red, Orange, Silver metallic
 Regulator Size: Diameter Φ 76mm and 63mm



Not for EU
 Pic 3



Pic 4



Boat & Caravan
 Pic 5

Premium Type A235is-M

Inlet size: 35mm
 Outlet size options:8mm/10mm/11mm
 Capacity: 1.5 - 2.0 kg/h With Excess flow
 With safety on-off switch
 With manometer for gas level/gas leak indication
 360 degree rotating manometer
 Color options:Silver,Blue Yellow, Red, Orange, Silver metallic
 Regulator Size: Diameter Φ 63mm



Pic 6



Pic 7

Low Pressure Regulators-Hand Wheel on Regulator for LPG A300i

Application:

Used in conjunction with a hand wheel cylinder valve to reduce cylinder pressure to a 28-50 mbar outlet pressure. Connected with domestic Appliances: Stoves, cookers, cabinet heaters, patio heaters, BBQ, etc.

Specifications:

Inlet options: Numerous possible types of inlet
 Outlet options: 8 / 10 / 11mm nozzle, 1/4"LH thread connector
 Rated capacity 1.5 kg/h
 Outlet pressure options: 28 / 30 /37 /50 mbar
 Nut options: Brass or Steel
 Body and cover : Die cast zinc alloy optional aluminum
 Diaphragm: NBR



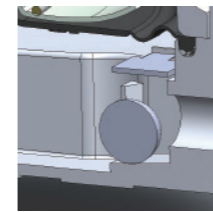
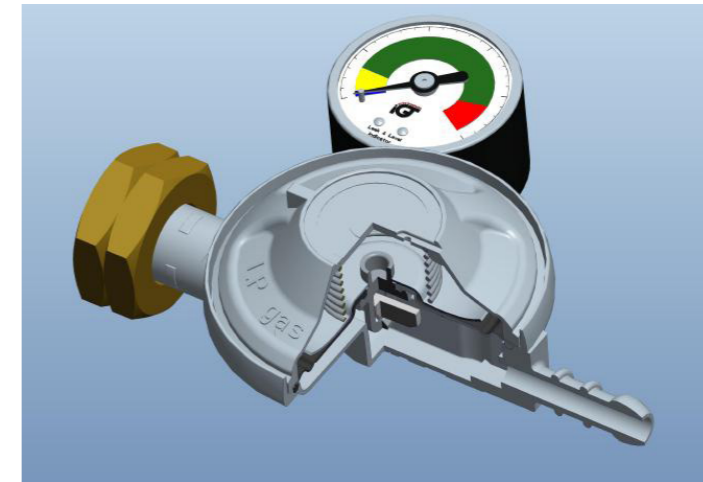
Basic Type
A300ip/A310i



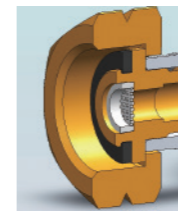
Standard Type
A300iep/A310ie



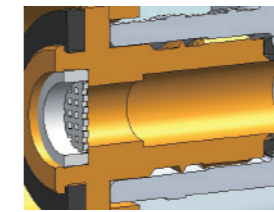
Premium Type
A310iep/A310iep-M



Optional Excess Flow valve, delivers in manual or automatic version



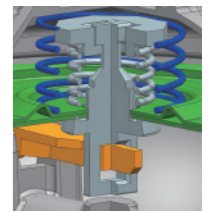
Filter at inlet to prevent foreign matters to enter regulator



Inlet pressed secured by crimping included rubber o-ring as secondary seal.



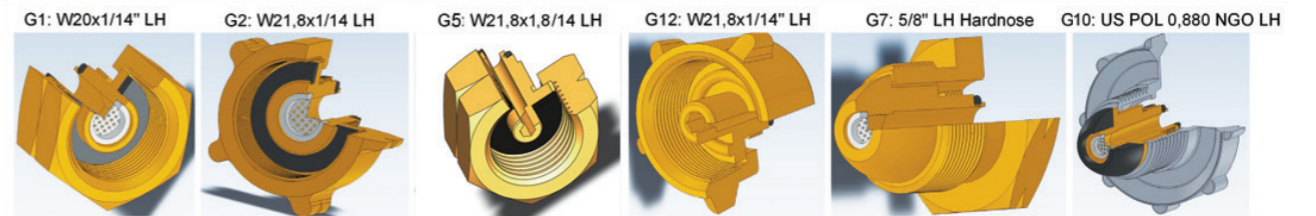
Regulator equipped with level indicator and leak test function. 360 degree rotating manometer



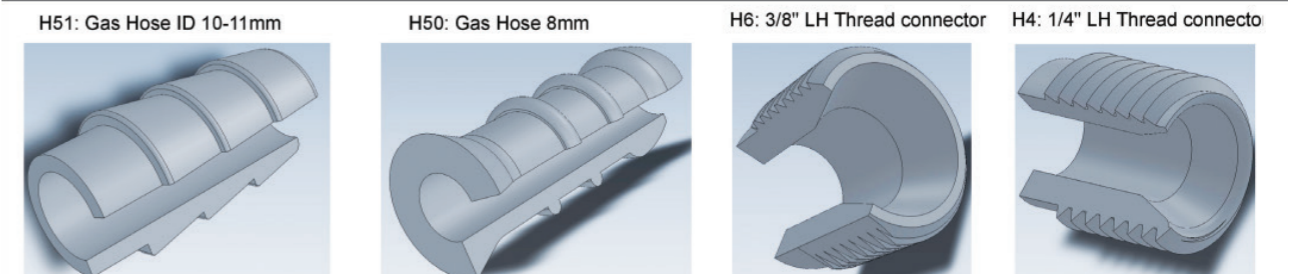
Diaphragm relief valve Optional

Standard

Most Common Inlets



Most Common Outlets

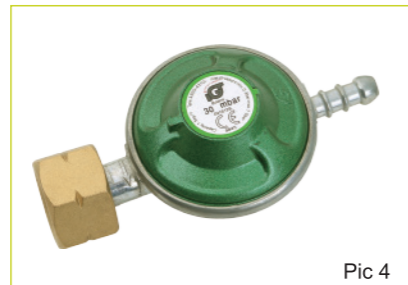


Basic Type A300ip/A310i

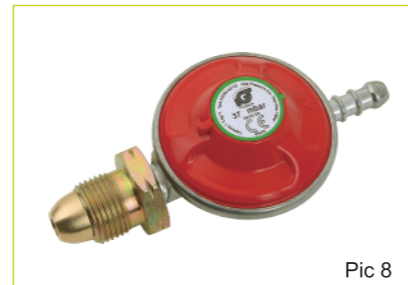
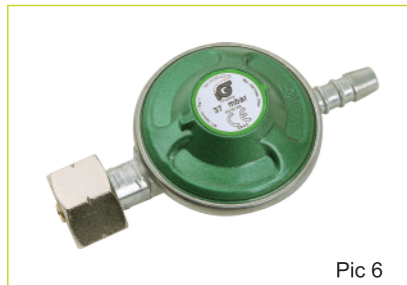
Inlet options: Numerous possible types of inlet
 Outlet size options: 8mm/10mm/11mm, 1/4"LH
 Capacity: 1.5kg/h
 Without Excess flow valve
 Color options: Silver, Blue, Red, Silver metallic
 Regulator Size: Diameter Φ 63mm



Basic Type A300ip/A310i

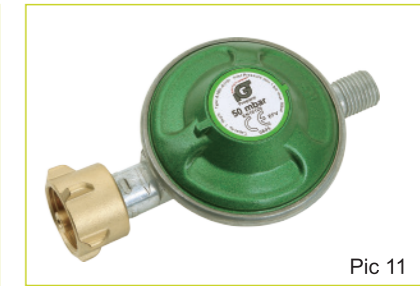


Basic Type A300ip/A310i



Standard Type A300iep/A310ie

Inlet options: Numerous possible types of inlet
 Outlet size options: 8mm/10mm/11mm, 1/4"LH
 Capacity: 1.5kg/h
 With auto EFV or manual EFV
 Color options: Silver, Blue, Red, Silver metallic



Premium Type A310iep/A310iep-M

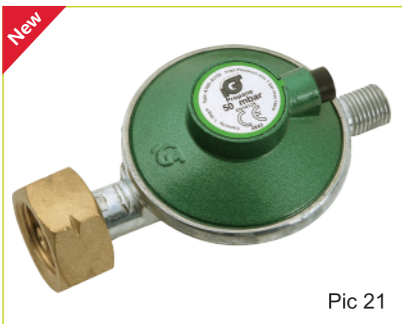
Inlet options: Numerous possible types of inlet
 Outlet size options: 8mm/10mm/11mm, 1/4"LH
 Capacity: 1.5kg/h
 With manometer for gas level/gas leak indication
 With auto excess flow valve or manual EFV
 Color options: Silver, Blue, Red, Silver metallic



Boat & Caravan A311i-G

Inlet options: Numerous possible types of inlet
 Outlet size options: 8mm/10mm/11mm, 1/4"LH
 Capacity: 1.5kg/h
 Without Excess flow valve
 Color options: Silver, Blue, Red, Silver metallic
 Regulator Size: Diameter Φ 63mm

**Low Pressure Regulators-Camping
 Regulator for LPG A500is**



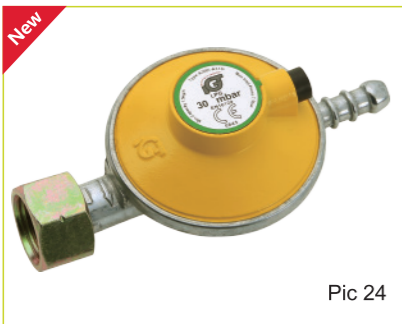
Pic 21



Pic 22



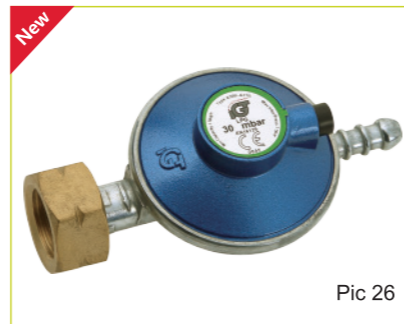
Pic 23



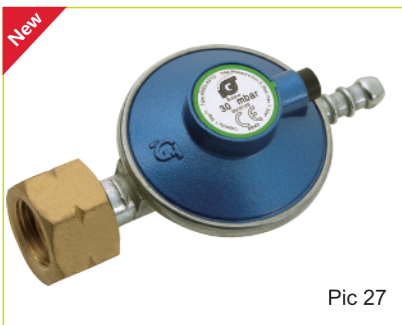
Pic 24



Pic 25



Pic 26



Pic 27

Application:

Used for outdoor camping gas cylinders for household.

Specification:

Inlet options: M14, M16, 7/16"
 Outlet options: 8/10/11mm nozzle, 1/4"LH thread connector
 Rated capacity 1.5kg/h
 Outlet pressure options: 28/30mbar
 Body and cover: Die cast zinc alloy optional aluminum
 Diaphragm: NBR

Basic type A500is

Regulator size: Diameter Φ 63 mm



Pic 1

Standard type A500i

Regulator size: Diameter Φ 63 mm



Rotating Inlet

Pic 2



Pic 3

Premium type A500i-M

Regulator size: Diameter Φ 63 mm



Pic 4



360 degree rotating manometer

Pic 5

CSA Approved



Features:

- Excess flow valve
- Diaphragm relief valve
- 50000 times cycle test = simulation of 10 years life time
- PLI (product liability insurance) 5 million usd
- 5 years limited warranty

Optional features:

- Manometer for leak test and gas level indication.

■ Inlet Pressure	25-250 PSIG
■ Outlet Pressure	280mmH2O=(11"W.C.)
■ Flow Capacity	1.5Kg/hr
■ BTU/hr	70500
■ Inlet Connection	QCC OR P.O.L
■ Outlet Connection	5/8"-18UNF
■ Application	BBQ, Fish Cookers, Gas Heaters, Stoves

CSA Approved



Pic 1



Pic 2



Pic 3

High Pressure Regulator



Pic 4



Pic 5

95000 BTU Regulator



Pic 6



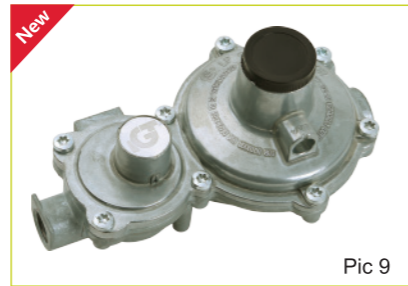
Pic 7

Optional with QCC or POL type inlet and Hose assemblies.

CSA
Approved



Pic 8



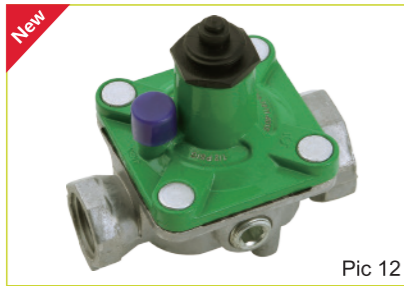
Pic 9



Pic 10



Pic 11



Pic 12

Application:

Used in large power LPG, Natural gas

Specifications:

Inlet options: Numerous possible types of inlet

Outlet options: 1/4"LH thread connector

Rated capacity 3 kg/h

Outlet pressure options: 300 /500 /700 mbar

Nut options: Brass or Steel

Body and cover : Die cast zinc alloy

Diaphragm: NBR

Regulator Size: Diameter Φ 76mm

5 YEARS
WARRANTY



Pic 1



Pic 2



Pic 3



Pic 4



Pic 5

LPG Gas Regulators A400i

Change Over

4kg/h Mid Pressure Regulator A400i

Adjustable or fixed outlet pressure

Application:

To reduce the pressure of LPG in the domestic installations.
Optional with internal relief valve security system, to prevent overpressure in the pipeline.

Specifications:

Inlet options: Numerous possible types of inlet
Outlet options: 10mm, 3/8" LH thread connector
Rated capacity 4 kg/h
Outlet pressure options: 30-700mbar
Nut options: Brass or Steel
Body and cover : Die cast zinc alloy
Diaphragm: NBR



Pic 1



Pic 2



Pic 3



Pic 4

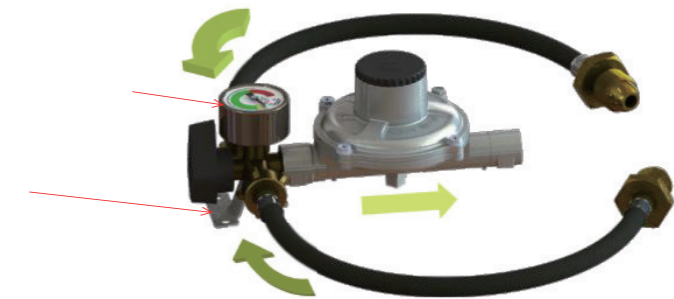
What does the system do ?

To keep your gas supply continuously . Just easily switch the knob to either of the gas filled cylinders, left or right side.

Optional Manometer:
equipped with or without manometer
the alternative of the panel diameter is 35mm or 40 mm .

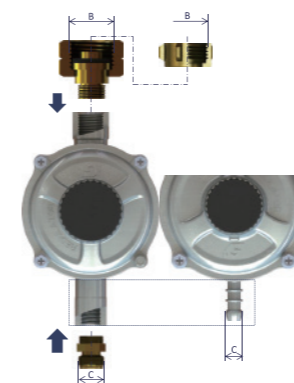
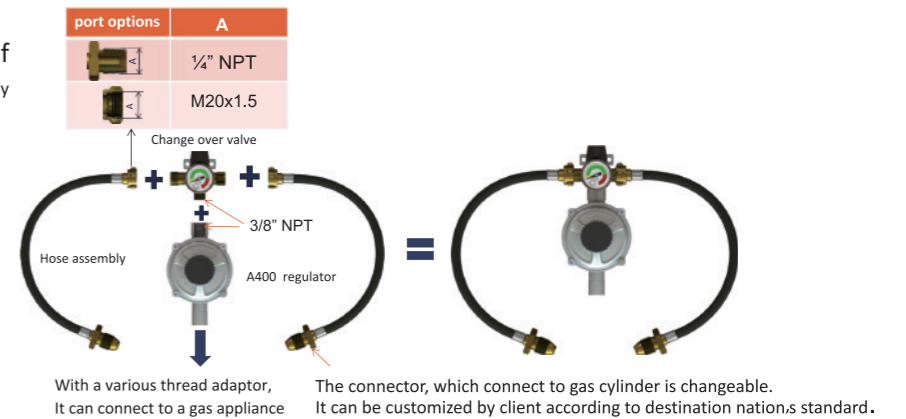
Optional Bracket:
with or without a galvanized metal bracket, with which can be mounted on your wall.

Application medium	LPG , Butane , Propane or their mixture
Work pressure	20 bar



What does the system comprise of

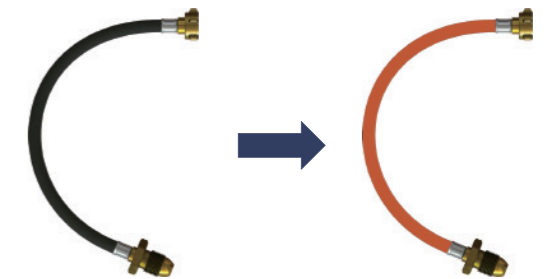
Change over valve +A400 regulator + Hose assembly
= Manual change over system



A400 LPG gas regulator with various inlet and outlet connection options	
Inlet connection options (B)	G1,G2,G4,G5,G10
Outlet connection options (C)	G2 (W21.8x1.814), W21x1.814 ID 8mm hose , ID10 mm hose, 3/8" LH,
Guaranteed flow rate	4 kg/h
Supply pressure	0.3~16 bar
Set pressure	30 mbar, 37 mbar , 50 mbar

With different inserts on mold of the body, this part is changeable. there are various outlet connections for selection

Optional hose material



EN16436 in rubber Class 3

High Pressure Regulators B100/B235is/B300

Snap on compact HP regulator B100

Application:

Used in conjunction with a cylinder valve to reduce cylinder pressure to a 0-2 bar outlet pressure required for operation of torches, burners and furnaces for commercial and industrial applications

Specifications:

Inlet options: 20/21/22/27mm
 Outlet options: 8mm/11mm
 Rated capacity 8 kg/h
 Outlet pressure : 0~2bar (Adjustable)
 Body and cover : Die cast zinc alloy
 Diaphragm: NBR



Jumbo HP regulator B235is

Application:

Used in conjunction with a cylinder valve to reduce cylinder pressure to a 0-4 bar outlet pressure required for operation of torches, burners and furnaces for commercial and industrial applications

Specifications:

Inlet size: 35mm
 Outlet options: 8mm/10/11mm, 3/8" BSP or G1/2" thread connector
 Rated capacity 4 kg/h
 Outlet pressure : 0~4bar (Fixed or Adjustable)
 Body and cover : Die cast zinc alloy
 Diaphragm: NBR
 Optional metal on/off cap



B235isf



B235is

High Pressure Regulators B100/B235is/B300

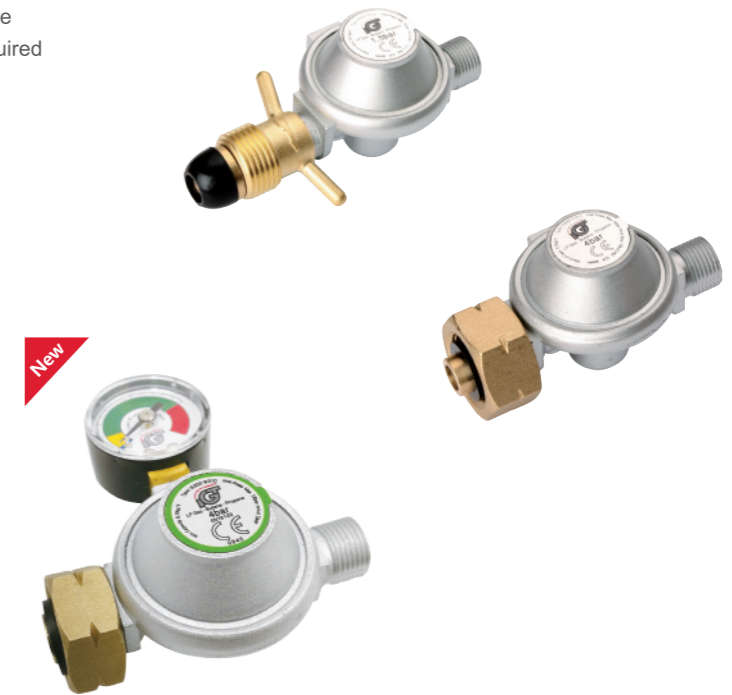
Hand Wheel HP regulators-B300/B310/B310-M

Application:

Used in conjunction with a cylinder valve to reduce cylinder pressure to a 0-4 bar outlet pressure required for operation of torches, burners and furnaces for commercial and industrial applications

Specifications:

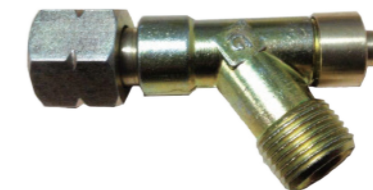
Inlet: Numerous possible types of inlet
 Outlet connection : 3/8" BSP thread connector
 Outlet pressure options: 1.5 / 2.5 / 4bar
 Nut material options: Steel or Brass
 Body and cover : Die cast zinc alloy
 Diaphragm: NBR



Excess Flow Valve -A900

Specification:

Inlet Female 3/8" LH
 outlet Male 3/8" LH
 Inlet press: 1.5 - 4 bar
 Cut off rate: 6 - 8.5 kg/hr
 DVGW approved.



Unreduced Pressure Coupling C100/C235is

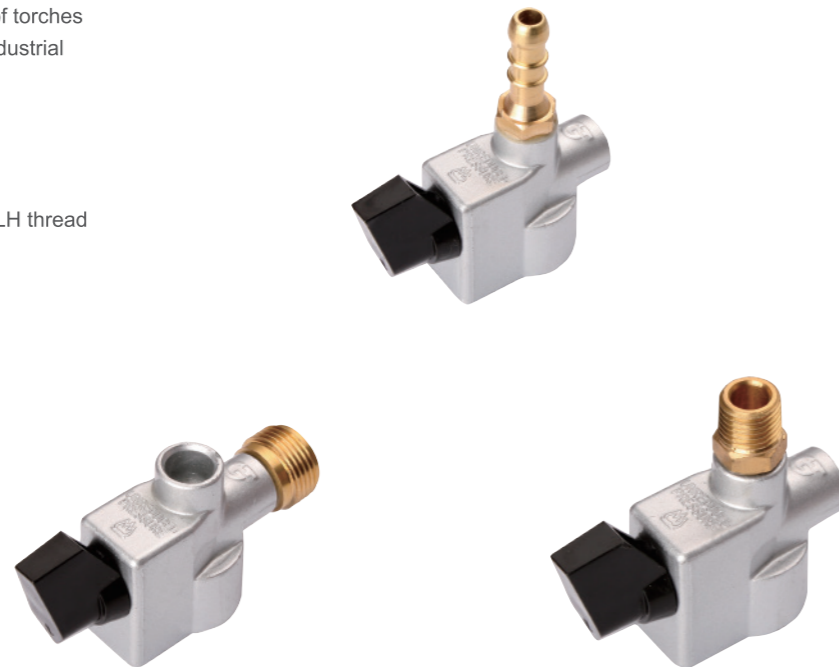
Compact Coupling C100

Application:

Used in conjunction with a cylinder valve to deliver an unreduced pressure required for operation of torches burners and furnaces for commercial and industrial applications

Specifications:

Inlet options: 20/21/22/25.6/27mm
 Outlet options: 8mm/11mm, 1/4"LH and 1/2"LH thread
 Vertical or Horizontal
 Capacity 4 kg/h
 With non return valve
 Body and cover : Die cast zinc alloy



Jumbo Coupling C235is

Application:

Used in conjunction with a cylinder valve to deliver an unreduced pressure required for operation of torches burners and furnaces for commercial and industrial applications

Specifications:

Inlet size: 35mm
 Outlet options: 8mm/10/11mm, 3/8" BSP or G1/2" thread connector
 Capacity 4 kg/h
 Outlet pressure : Full cylinder pressure
 With non return valve
 Body and cover : Die cast zinc alloy
 Diaphragm: NBR



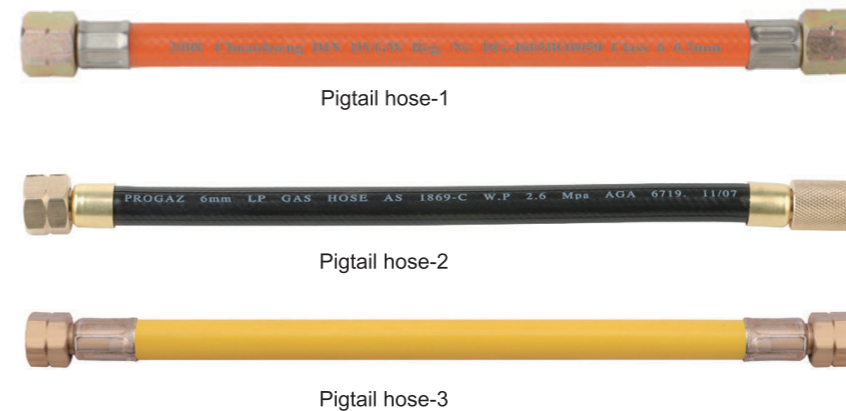
Hose and Accessories

Hoses and clamps

Application:

These hoses are High pressure hoses(Pigtails) used to connect LPG cylinders to manifolds, automatic changeovers or multi cylinder systems.

Standards: BS3212 , EN16436
 DVGW,AGA,CSA,NTC-3561
 Inside dia.:6/6.3/8/9/10mm
 Certification: Optional certifications, REACH,ROH's,Phthalate.
 Clamps: Stainless, 8-18mm/12-22mm, with or without wing.



Fittings

Application:

These fittings can be used in LPG, installations.



EU adaptor set

Options For Packaging:

Color box, Display box, Floor Display Packing



Plastic bag with header card Packaging



Blister packaging



IGT Low Level Indicator and Leak detection gauge

The gas level indicator is working on the gas cylinders pressure.

When you empty a gas cylinder consuming the LPG the pressure does not fall in a linear way.

The gauge needle will not move downwards stepwise as you start consuming the gas. Actual it stays steady in the green area until the gas level reach 3-5 % and you have less than 500 gram gas left in the cylinder. Only when the gas consumption exceeds the gas supply of the gas cylinder does the gauge needle move and then quite fast into the yellow area. With 500 gram LPG left you will have 1-2 hours cooking/heating left depending of your gas appliance consumption pattern.

The indicator works well as intended, as it is the early warning of running out of gas we want to achieve. For most users 500 gram LPG equals 1-2 days consumption and it is a reasonable precise early warning of running dry.

Check out the IGT videos on www.igt-lpg.com

A100i



A200i


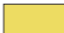




A300i



Level Indication:

For LPG - Butane - Propane Cylinders
Note Actual level can only be observed at gas flow from gas cylinder to gas appliance.

-  Cylinder empty no more liquid Gas. Do not use before cylinder is re-filled.
-  Early warning - Plan re-fill soonest. Liquid level estimate 0.2 to 0.8gk ~ 1 to 4 hour use.
-  Sufficient level of gas inside cylinder. Ready to go on. Estimated level of gas min. 1kg ~ 5 hours use.
-  WARNING: High temperature of Cylinder overfilled.

Leak Detection:

Regulator is connected to gas appliance by a gas hose. Gas appliance should be in shut off position.

Regulator is attached in correct position on the gas cylinder valve.

The Regulator is switched to ON position. The dial of the indicator should then go into green area.

The Regulator switch is moved back to OFF position. The dial of the indicator should then remain in green area.

Wait 5 minutes. If the dial is still in the same green area the installation is safe without leaks.

If the dial have moved to yellow or blue color, the installation is not safe and should be checked by using leak detecting spray.

Any leak should be eliminated before use of the gas appliance.